

# MAMALU PRO™

Special needs stroller

MAMALU Pro™ is a next-generation stroller designed to ensure maximum comfort and convenience during every outing. Its adjustable backrest tilt allows for effortless customization, providing optimal support tailored to your child's needs. The high-quality Comfort upholstery enhances both aesthetics and hygiene, ensuring a soft and safe seating experience. Thanks to its intuitive adjustments, MAMALU Pro™ guarantees a smooth and enjoyable ride, whether for relaxation or exploring the surroundings. More than just a stroller, it's a reliable companion for everyday adventures with your child.



Lightweight

24<sup>+</sup>

24-month warranty



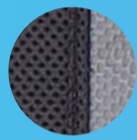
Stable construction



Easy operation

## Colors

**COMFORT upholstery**  
Standard equipment



Standard

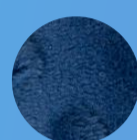
**MINKY PAD**  
Upholstery available as an option



Rose



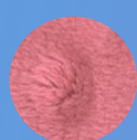
Ocean



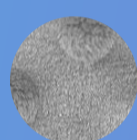
Space



Lava



Lilac



Moon



Rose



The umbrella frame of the stroller makes it fold easily and quickly, and its small dimensions make it easy to transport after folding.



Adjustable headrest, 5 points safety belts, footrest and seat depth make the stroller grow with your child.



90 - 130 cm

Indicative user height



50 kg

Max. user weight



For **more details** about the product, please visit our website.

**This is a medical device.  
Use it in accordance with the user manual or the label.**

### INDICATIONS

Cerebral palsy (CP) – various types and forms | Brain and spinal cord injuries of various etiologies with limb paresis, severe balance disturbances, and coordination impairments | Demyelinating diseases (multiple sclerosis – MS, amyotrophic lateral sclerosis – ALS, and others) | Meningocele | Muscle diseases with paresis and paralysis (including dystrophy, myasthenia gravis, polymyositis) | Genetic syndromes with limb paresis | Degenerative and metabolic diseases of the nervous system | Degenerative and rheumatic joint diseases | Other diseases with limb paresis, paralysis, and musculoskeletal impairments | After injuries, following traumatic brain injuries or spinal cord injuries with limb paresis and paralysis, particularly with quadriplegia (as part of the rehabilitation process or as permanent orthopedic support)

### CONTRAINDICATIONS

**Observation:** Monitor user during standing. Stop therapy if paleness, sweating, fainting, joint overload, or body deformations occur; consult with a doctor or physiotherapist | **Absolute Contraindication:** Critical condition of the user. | **Relative Contraindications:** Resting hypertension > 200/110 mmHg, pulmonary hypertension, heart rhythm disorders, unstable asthma, unstable metabolic issues, moderate heart valve disease. | Conditions like healing fractures or severe osteoporosis that prevent weight-bearing | Incomplete fracture healing (unless approved by a doctor) | Postoperative joint load restrictions | Pain from dislocation, excessive tissue stretch, or pressure; dislocation without pain is not contraindicated | Significant hip/knee flexion or ankle contractures; ensure no excessive pressure or stretch on affected areas.